

# TEMPUR-MED® OPERATING TABLE MATTRESSES AND POSITIONING PRODUCTS

[www.tempurmed.co.uk](http://www.tempurmed.co.uk)

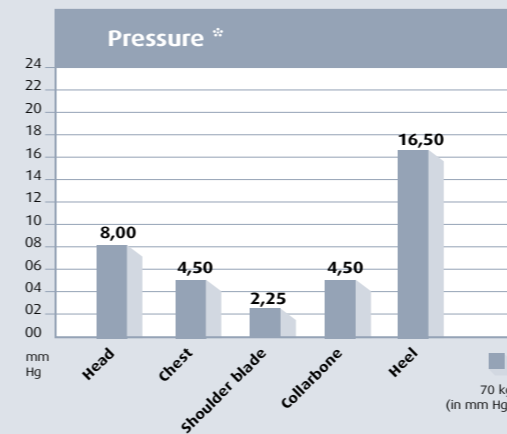


# TEMPUR® MATERIAL



## WHY DOES TEMPUR MAKE A DIFFERENCE?

### PRESSURE POINTS ON A PATIENT (70KG) PLACED ON A TEMPUR MATTRESS



The visco-elastic and thermo active properties ensures optimal pressure relief. Patients that are placed on the TEMPUR Mattress mould to the material due to their body weight and temperature. The pressure is absorbed by the mattress and spread evenly across the entire surface, reducing the risk of pressure ulcers.

### PU-COVER

All TEMPUR-MED products are covered with a water-proof and air permeable PU-cover. The PU-cover is welded to avoid leakage. It is easy to remove, can be machine washed (95° C) and is easy to clean, disinfect and sterilise using cleaning agents commonly used in hospitals.

### ADVANTAGES OF THE PU-COVER:

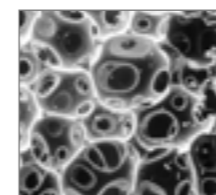
- Stretchable
- Easy maintenance
- Easy cleaning
- High level of hygiene
- Quality assured
- Risk profile – up to high risk
- Washable in 95° C
- Vapour permeable
- Antibacterial treated



### WHAT IS TEMPUR?

The TEMPUR Material is a visco-elastic, temperature sensitive open cell material which has unique pressure relieving qualities. Unlike ordinary polyurethane which features irregular cell shapes that simply compress under weight and degenerate over a short period of time, the TEMPUR Pressure Relieving Material is composed of billions of visco-elastic spherical shaped, open cells. The cells

respond to body temperature and weight then shift and reorganise their position to mould to the exact contours of the patient's body. The TEMPUR Pressure Relieving Material becomes softer in warmer areas and remains firmer in cooler areas, where less body contact is being made.



TEMPUR has a density of 85-110 kg/m<sup>3</sup>. The open cell structure allows air to circulate.



TEMPUR is an open cell visco-elastic, temperature sensitive material that conforms to the exact contours of the body.

### REGULATIONS

All TEMPUR-MED Products with a PU-Cover comply to the following standards:

Class 1 Medical Devices Directive 93/42/EEC.  
British Standard safety regulations, BS EN 597, parts 1 & 2, BS6807 and BS 7177.

# OPERATING PRODUCT RANGE



## OPERATING TABLE PADS THE PAD AIDS THE PREVENTION OF PRESSURE ULCERS



1 PART



3 PART



5 PART



## TEMPUR-MED OPERATING TABLE PADS

- Standard and customised sizes available
- Quality outcomes for pressure ulcer prevention and treatment
- Available for paediatric and heavy duty users
- Fire compliant
- Welded seams
- Risk profile – low to very high risk
- Colour: Navy blue

### REGULATIONS

All TEMPUR-MED Products with a PU-Cover comply to the following standards:  
Class 1 Medical Devices Directive 93/42/EEC.  
British Standard safety regulations, BS EN 597, parts 1 & 2, BS6807 and BS 7177.



### TEMPUR-MED OPERATING NECK PILLOW

The Pillow stabilises the position of the patient's head and neck.

Size: 25 x 30 x 10/7 cm



### TEMPUR-MED OPERATING SUPPORT NECK PILLOW

The Pillow offers anatomically correct support and is suitable for intubation of the patient.

Size: 30 x 25 x 10/5,5 cm



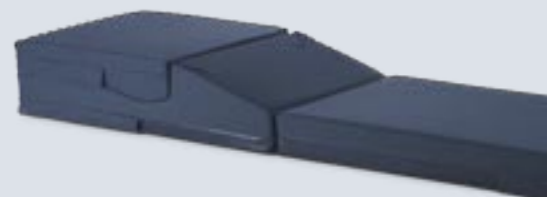
### TEMPUR-MED OPERATING ARM PAD

A standard sized arm pad, which fits most arm supports.

Size: 18 x 60, 5 x 8 cm

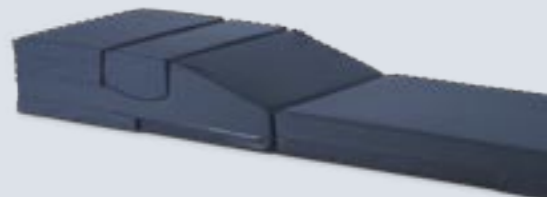
### TEMPUR-MED OPERATING POSITIONING KIT (TWO PARTS)

The correct positioning of the patient during an operation is often a problem in regard to stabilisation and pressure relief, which is especially prominent during operations on patients lying on their side. The TEMPUR-MED Operating Positioning Kit has been designed to stabilise the patient in a variety of positions – even when lying on the side – and it offers optimum pressure relief.



### TEMPUR-MED OPERATING POSITIONING KIT (THREE PARTS)

The TEMPUR-MED Operating Positioning Kit can prevent the compression of veins, nerves in shoulders, and arms. During anaesthetisation the patient can be positioned on his back and then on his side by removing the upper part of the mattress. The TEMPUR-MED Operating Positioning Kit can be tailor-made to fit any size of operating table.



# POSITIONING PRODUCTS



**TEMPUR-MED UNIVERSAL PILLOW**

TEMPUR-MED Universal Pillows are well suited for positioning purposes. For relaxed, pressure relieving support for the neck, thorax, arms, knees and feet.

- Size: 50 x 20 x 10 cm
- Size: 35 x 20 x 10 cm
- Size: 40 x 16 x 8 cm
- Size: 40 x 15 x 6 cm



**TEMPUR-MED POSITIONING ROLL**

TEMPUR-MED Rolls are well suited for positioning purposes. For relaxed stabilisation during or after operations or for therapeutic treatment in bed. Ideal for use under knees and feet.

- Size: 15 x 40 cm
- Size: 10 x 40 cm



**TEMPUR-MED LATERAL SUPPORT**

The TEMPUR-MED Lateral Support provides stable positioning for the back and abdomen during operations in a lateral position.

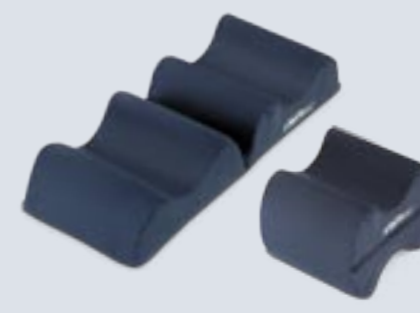
- Size: 45 x 15 x 9 cm
- Size: 35 x 15 x 9 cm



**TEMPUR-MED LEG SPACER (SINGLE)**

TEMPUR-MED Leg Spacer (single) can be used under arms and legs where stable relief is desired. The spacer can also be used between the legs.

Size: 27 x 20 x 10 cm



**TEMPUR-MED LEG SPACER (DOUBLE)**

TEMPUR-MED Leg Spacer (double) has two possible uses: folded together between the legs, relieving pressure on the legs. Unfolded under the ankles, relieving pressure on the heels.

Size: 27 x 20 x 20 cm



**TEMPUR-MED VEIN CUSHION**

TEMPUR-MED Vein Cushion for improving circulation and relieving pressure on heels. It can improve blood circulation and is especially good for persons with poor circulation. The Vein Cushion is particularly well suited for relieving pressure on heels. It is available both with a velour cover and an incontinence cover.

Size: 50 x 70 x 10/0 cm

**REGULATIONS**

All TEMPUR-MED Products with a PU-Cover comply to the following standards:  
 Class 1 Medical Devices Directive 93/42/EEC.  
 British Standard safety regulations, BS EN 597, parts 1 & 2, BS6807 and BS 7177.

**FEATURES**

- EASY TO CLEAN
- FIRE RESISTANT
- MAINTENANCE FREE
- MEDICAL APPLICATION
- NON-SLIP BASE
- PATIENT WEIGHT GUIDELINES
- EASY TO USE
- 3-YEAR GUARANTEE
- WELDED COVERS

**BENEFITS**

- ▶ REMOVABLE/WASHABLE COVER
- ▶ COMPLIANT & SAFE FOR THE USER
- ▶ COST EFFECTIVE
- ▶ FOR PRESSURE ULCER PREVENTION
- ▶ TO PREVENT CUSHION SLIP
- ▶ CAN ACCOMMODATE ALL PATIENT WEIGHTS
- ▶ TRANSFERABLE
- ▶ ALLOWS FORWARD BUDGET PLANNING
- ▶ PREVENTS LEAKAGE

[www.tempurmed.co.uk](http://www.tempurmed.co.uk)



THE ONLY MATTRESS AND  
PILLOW RECOGNIZED BY  
NASA AND CERTIFIED BY  
THE SPACE FOUNDATION

## TEMPUR IN BRIEF

Tempur-Pedic International, Inc. is an international company that specialises in developing, producing and selling products manufactured from the unique TEMPUR Material. TEMPUR is a high-tech, visco-elastic material, originally developed by NASA for the American space programme in the 1970s. TEMPUR acquired the rights to manufacture the material at the end of the 1980s, and at the start of the 1990s our production engineers successfully developed a high-quality process for the manufacturing of the TEMPUR Material. This paved the way for transferring NASA's technology to use in private homes and in the health sector throughout the world.

TEMPUR Products for the health sector are launched under the international name: TEMPUR-MED.

**Shiloh**

◆ HEALTHCARE

**For further information please contact our  
exclusive UK Distributor:**

Shiloh Healthcare  
Lion Mill  
Fitton Street  
Royton  
Oldham OL2 5JX

**Contact:** Joanne Hunt  
**Direct Line:** 0161 785 3417  
**Direct Fax:** 0161 785 3641  
**Email:** joanneh@shiloh.co.uk  
**Website:** www.shiloh.co.uk



The TEMPUR-MED Products  
are CE-marked Class 1  
Medical Devices and meet  
the standards laid down in  
Directive 93/42/EEC.

